

WINTER 2016

# Civitas

CENTRAL COLLEGE ALUMNI MAGAZINE

## FOREVER DUTCH

Initiative supports Central's athletics legacy for future students

## SCIENCE OF COFFEE

Former chemistry major now working as a Starbucks scientist

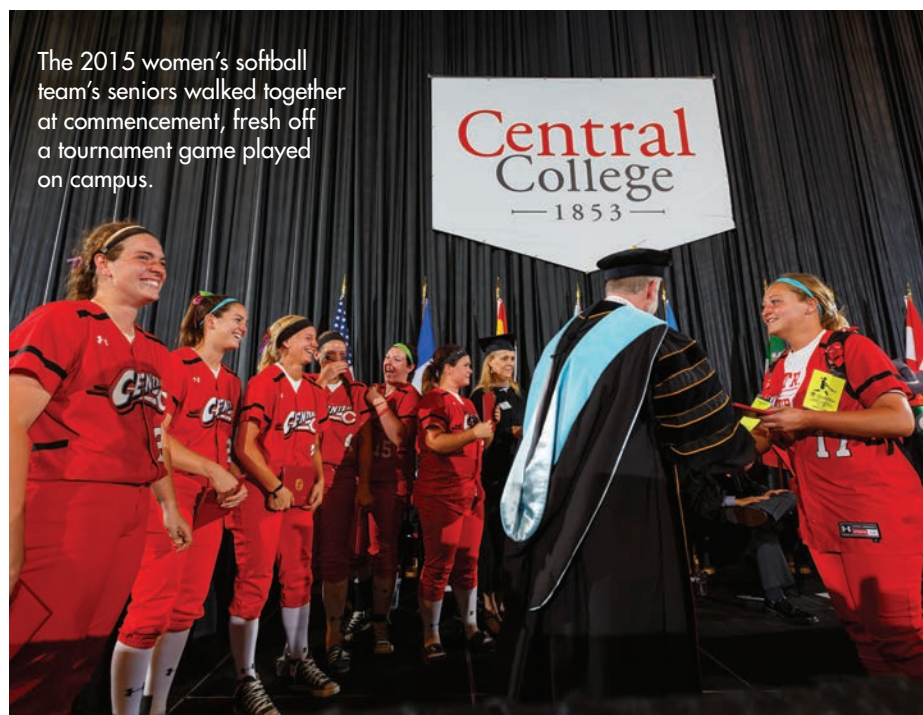


THINGS  
TO LOVE  
ABOUT  
CENTRAL

— SINCE 1853 —

# A Once in a Generation Opportunity

by Mark Putnam, Central College president



The 2015 women's softball team's seniors walked together at commencement, fresh off a tournament game played on campus.

As I walk the campus I remain ever mindful of the legacy I hold as the 21st president of Central College. The Central presidency is best understood as a trust that demands stewardship to honor tradition and leadership to pursue innovation. Our history includes periods of aggressive growth and expansion, as well as times of reflection and renewal. An institution that is 163 years old will invariably have many stories to tell.

The legacy of intercollegiate athletics is one of our important stories. When President Emeritus Ken Weller first penned the words "student-athlete" more than 40 years ago, he established the enduring foundation for the philosophy that guides the NCAA Division III to

this day. Though we constantly feel the gradual pull of professionalization and the influence of money in college sports, we continue to be anchored by our commitment to an educational emphasis that places the role of student ahead of athlete.

At its best, intercollegiate athletics is a form of experiential learning. Students are placed in a practice setting in which they learn to work in teams, exercise leadership, overcome adversity, manage conflict and become more resilient. So many of our alumni point to these experiences as being instrumental in their overall development.

We recently announced a new initiative that embraces our legacy of a healthy athletics tradition, with the

innovations necessary for continued success. The program is aptly named, Forever Dutch. I love these words. They point to an enduring quality we honor in our history and a character that is uniquely ours. We don't do things the way others do. We set our own course. Our academic community is willing to try new things and embrace change, as long as we do not lose our identity in the process.

Forever Dutch involves the expansion and renewal of our athletics complex, but if it were only about a building and fields, we would be much less inspired. The spaces we provide for our student-athletes and coaches are an extension of our learning enterprise and help us form lifelong relationships and build community. This is much more than a game changer. This is a life changer. Many of our alumni tell me stories of how their lives were shaped by participation in athletics. We bear a special responsibility for making sure this experience continues.

The P.H. Kuyper Gymnasium is a facility that has served us ably for 45 years. If ever a building was expected to fulfill more than its original promise, it is this one. I look back at the bold commitment of administrative, faculty, trustee and alumni leaders who stepped forward to accept a challenge to build an athletics facility for the future. The ambitions for that generation have been fulfilled. Now the long arc of time is reaching for us to step forward to preserve a commitment and extend a promise for today and for the generations to come.



## EDITOR

Laura Billingsley '04

## COPY EDITOR

Jenni Hodges

## SPORTS EDITOR/DIRECTOR OF CENTRAL COMMUNICATIONS

Larry Happel '81

## SENIOR GRAPHIC DESIGNER

Lindsay Maurer

## EDITORIAL ASSISTANTS

Mary Benedict

Lisa Thurman Fyfe '87

Connie Aalbers Marlow '76

Lynne Petty

Peggy Johnson Van Den Berg '83

## DIRECTOR OF ALUMNI RELATIONS

Kathy Cashen Thompson '87

## COMMUNICATIONS BRAND AND PROJECT MANAGER

Steffanie Bonnstetter

Civitas is published quarterly by the Central communications office for alumni, parents and friends of Central College. For information on the Civitas mission, visit [civitas.central.edu](http://civitas.central.edu).

Civitas (USPS 096-840) is published by Central College, 812 University, Pella, IA 50219-1999. Periodicals postage paid at Pella, Iowa, and additional offices.

Postmaster: send address changes (PS 3579) to Civitas, 812 University, Pella, IA 50219-1999. Address changes also may be sent to [alumni@central.edu](mailto:alumni@central.edu).



## Production notes:

Civitas is printed with a soybean-based ink by Town Crier, Pella, Iowa.

CIVITAS.CENTRAL.EDU

641.628.9000



From the Pieterpol Cup to the Lemming Race, traditions on campus are among our favorite things.

winter 2016

# contents

## • on the cover •

- 6 53 SINCE 1853  
We're celebrating Central with our favorite things, 53 to be exact.

## • features •

- 6 53 FAVORITE THINGS ABOUT CENTRAL (SINCE 1853)  
We present, in no particular order, a sampling of the great traditions, people, icons and more that make Central what it is: a college with an illustrious past and a bright future.

- 22 FOREVER DUTCH  
The next phase in a major facilities upgrade at Central was announced Jan. 30.

## • departments •

- 2 AROUND THE POND  
4 ATHLETIC UPDATES  
25 ALUMNI NEWSNOTES  
33 PARTING SHOT



The Forever Dutch initiative aims to update athletics facilities.



Singing for celebrities is a regular occurrence for Chris Weaver '10.

## ACTORS AND ALUM IN RESIDENCE



The Theater of Public Policy used improv to explore issues in sustainability.

Public policy and improvisational theater collided in The Theater of Public Policy and Adam Mason's residency at Central. The Minneapolis troupe of actors interviewed Mason '02, state policy organizing director at Iowa Citizens for Community Improvement, and interpreted sustainability topics through improv performances. Both guests also led workshops for Central and Pella High School students.

The residency was made possible by the Thomas J. and Charlene P. Gaard Endowed Residency in the Liberal Arts. This signature residency is intended to benefit Central College students, faculty, staff and the Pella community. It allows Central to host notable visitors on campus for multi-day residencies that reflect Central's liberal arts emphasis, enhance students' education and enable meaningful and up-close exchanges with experts. This presentation was also supported by the Arts Midwest Touring Fund.

March 21-23, the illustrious American Shakespeare Center comes to Central through the Thomas J. and Charlene P. Gaard Endowed Residency in the Liberal Arts. "Julius Caesar," "Henry V" and "The Importance of Being Earnest" will be performed.



## GEISLER LIBRARY RENOVATED

Throughout the fall, Geisler Library's second floor was renovated for better function, aesthetics and student collaboration. Construction opened the floor plan to increase light and student traffic — and made room for the Media Center, new offices and three new instructional areas.

"The Geisler Library has always been about how we serve students," says director Beth McMahon. "Modern libraries need to be a place for people, not for stuff."

The first people students see in the library will be librarians, McMahon says — their offices are now front and center. Students shouldn't have to wonder who can help, and librarians shouldn't just put materials in front of them, she says. Instead, students should immediately find people interested in them and what they're doing.

McMahon says Geisler's changes will help encourage relationships between students, faculty and staff, and connect students to important resources and services, including research assistants, writing support, tutoring, media services and more. Plus, everyone can enjoy the updated look. "We tried to jazz the place up a little bit," says McMahon.



Updates will refresh Geisler Library to make it more user-friendly.

## HAPPY BIRTHDAY, DR. WELLER

On November 17, we surprised former president Ken Weller to celebrate his 90th birthday. A crowd of Central family presented a large box filled with birthday cards from alumni and friends (Dr. Weller's birthday was November 22).

Dr. Weller led Central 1969-1990, authored the Division III philosophy and helped bring women's athletics into the NCAA. He lives in Pella, is active in Second Reformed Church and travels across the U.S. for Central athletic events.



Shirely and Ken Weller

## '71 CLASS ENDOWS SCHOLARSHIP

Members of Central's 1971 class, led by John Grieco and Jim Coddington, have provided funding to permanently endow the Class of 1971 Scholarship. When the classmates returned for their 40th class reunion at Homecoming 2011, they noted another class had created a scholarship and thought it would be a good idea to follow suit. Grieco and Coddington immediately contacted a group of '71 alumni who became the steering committee to help secure the funding. "Jim and I both believe that leaving a legacy at Central is important, and we are very proud that we were able to help make it happen," says Grieco. "We are hopeful it will inspire other classes to do the same."



William L. Rankin

## BOARD ROOM NAMED

Graham Annex board room has been named the Rankin Nakahara Board Room in honor of longtime Central supporters Dr. William (Bill) L. Rankin '69 and Lori F. Nakahara, his wife. The announcement was made at the Central College board of trustees meeting this fall. Rankin became a member of the board of trustees last spring.

Rankin studied psychology at Central, served in the military and received his Ph.D. in experimental psychology from Washington State University in 1976. He worked for Battelle Seattle Research Centers and Boeing before starting his consulting firm.

by Larry Happel '81

## CENTRAL RETURNS TO NCAA MEN'S CROSS COUNTRY MEET

Racing to its fourth consecutive appearance in the NCAA Division III national meet, the Central men's cross country squad placed 25th in the U.S.

Senior Cole Decker received all-America distinction by finishing 28th. He was also named the Central Region athlete of the year after winning the NCAA regional meet staged on Central's on-campus course Nov. 14.

Central was second at the 29-team regional meet, just ahead of Loras College, which edged the Dutch for the league title at Dubuque Oct. 31. Decker, junior Isaac Steffensmeier and sophomore Tanner Rathje earned all-conference honors.

The Dutch women were fourth in the league and 16th at the 30-team regional meet. Sophomore Holly McKinney was 14th at the conference meet, but surged to 13th in a 205-runner field at the regional.

### FUTURE BRIGHT FOR YOUNG FOOTBALL SQUAD

Flashing promise for the program's future, a youthful Central football team rallied for a 6-4 record.

There were just 12 seniors on the roster, Central's smallest senior class since 1994. Yet there were numerous young standouts, including record-setting sophomore wide receiver Sam Markham, who broke the season mark for receptions with 69 for 980 yards. He's already fourth in career receptions (121) and eighth in career yards (1,630).

Eight players were named to the all-Iowa Conference team. Markham, sophomore defensive lineman Corbin Blythe, junior defensive back Zach Matter and junior kicker Aaron Marcellus were each first-team picks.

### WOMEN SECOND IN GOLF

Freshman Brittany Coppess, sophomore Christine Ausman and sophomore

Ciera Pulse earned all-Iowa Conference distinction in propelling the Central women's golf team to a second-place league finish.

Coppess placed fifth at 80-77-82-87—326 in the tourney played at Pheasant Ridge Golf Course in Cedar Falls and Thunder Hills Country Club in Dubuque. Ausman took seventh and Pulse was ninth.

Central shot 326-326-352-332—1336. Wartburg repeated as champion with 1248 and Luther was third at 1389.

### LUNARDI WINS WOMEN'S SOCCER HONOR

Central junior goalkeeper Sydney Lunardi received third-team all-North Region recognition for a youthful Dutch women's soccer squad.

At 9-6-2 overall, Central was 3-2-2 in Iowa Conference play, taking fifth place. Lunardi, a two-time league defensive player of the week, freshman midfielder Lauryn Kramer and junior forward Kayla Sunvold

were named second-team all-conference. Central had just two seniors on its roster.

### FOURTH STRAIGHT ALL-LEAGUE WOMEN'S TENNIS AWARD FOR ALLGOOD

Central seniors Angie Allgood and Megan Davis each received all-conference women's tennis recognition in both singles and doubles.

Allgood was cited in singles for the fourth time. She posted a 7-5 record at No. 1 singles and has a 45-22 career record. Allgood and Davis were all-conference in doubles for the third straight year, going 9-5 at the No. 1 spot.

The Dutch were 7-2 overall and 5-2 in league matches, placing third.

### MEN'S SOCCER SQUAD BUMPED FROM LEAGUE TOURNAMENT

Central lost a tiebreaker and missed the conference men's soccer tournament for



Veteran men's soccer coach Garry Laidlaw provided a lot of instruction for a young squad. The Dutch will return nine starters next fall.

the first time since 2001.

The Dutch, 4-13 overall and 1-6 in the league, tied for sixth place.

Yet coach Garry Laidlaw is excited about the program's future, with nine returning starters, including the team's top scorers, sophomores Bryce Leonard and Salvador Villanueva.

## YOUNG VOLLEYBALL TEAM SHOWS PROMISE

There was cause for enthusiasm despite some inconsistency from a young Central volleyball squad.

Losing senior right-side hitter Emily Stoakes to injury for most of the year, was a preseason setback. With middle hitter Hannah Laflin as the only other senior on the roster, Central relied on its underclassmen in a 15-18 campaign. But sophomore middle hitters Jenna Dille and Emily McDonald signaled that brighter days are ahead. Dille boasted a team-high .307 attack percentage while McDonald was tops in kills (1.75 per set) and blocks (0.75). Freshman setter Madison Egger averaged 5.01 assists.

## CENTRAL'S WASSENAAR WINS NATIONAL HONOR

Central senior tight end Jake Wassenaar took the field at the Allstate Sugar Bowl in New Orleans Jan. 1 as a member of the Allstate American Football Coaches Association Good Works Team.

Wassenaar was among just six Division III players chosen for the 22-man squad.



The players were cited for their volunteer service work. It's the fourth time a Central player was tabbed for the elite squad since the program's launch in 1997.

An elementary education major with a 3.92 grade point average, Wassenaar is deeply involved with The Raining Season, an organization supporting orphaned children in Sierra Leone. He's also part of Central's Fellowship of Christian Athletes leadership team, has participated in a pair of two-week service trips to south Texas with Central's Campus Ministries program and helped teach English to Burmese refugees in Des Moines.

## DE WAARD LEAVING CENTRAL FOOTBALL SIDELINE

As passionate as he was successful, defensive coordinator Don De Waard '82 is giving up his position on the Central College football staff after an unrivaled 35-year career.

A staple on the Central sidelines, De Waard prodded Dutch defenses to victory

in 302 of 377 games during his tenure. If he were a head coach, he'd rank No. 1 in the U.S. among active coaches on the NCAA college and university wins list, and 11th all-time. His .801 victory percentage would be seventh among active Division III coaches. He's been part of 18 Iowa Conference championships, 18 NCAA Division III playoff appearances, 19 playoff victories and two appearances in the NCAA title game at the Amos Alonzo Stagg Bowl.

In 2000, the American Football Coaches Association named De Waard the Division III assistant coach of the year.

"I don't like talking about retiring from it, because that indicates this was a job," said De Waard, who also served as linebackers coach. "It never was. This was all about the relationships I was able to have with the players and coaches."

De Waard will still continue to coach in the annual Tazon de Estrellas (Bowl of the Stars), played this year in Baja, Mexico Dec. 19. De Waard served as head coach for the fourth time for Team Stars and Stripes, a 50-player squad of NCAA Division III seniors nominated by head coaches. De Waard led a Central contingent that included seniors Cael Halfman, Jake Wassenaar, Dustin Smith and Nick Watson as well as athletic training education director John Roslien, the U.S. team's player personnel director, and head athletic trainer Frank Neu. The team defeated a squad of top Mexican college players, 15-14.



## 163 YEARS IS A LONG TIME.

Since Central's founding in 1853, there have been many "favorite things" on campus. Favorite foods, traditions, people, buildings, activities and programs. In reality, there are too many to count. Here, in no particular order, is a selection of 53 of our favorite things about Central. We know we've left out a lot, so if we've missed your favorite, drop us a note via social media or email.



@CentralCollege



/CentralCollege



@centralcollege



centralcollegeadm

alumni@central.edu

# #1

## CARAMEL BARS

Sweet, gooey, slightly crunchy, they're a favorite at Central Market and campus events.



# #2



## HAROLD & MAVIS

Officially named "The Quest" and "The Journey" the statues of a man reading and a woman carrying books were placed on the Peace Mall in honor of Harold and Mavis Geisler, champions of Central and major contributors to our efforts.

# #3



## GENNIS

Gorgeous weather always brings out gennis players at Central. Watch where you hit, though—the pond is surprisingly chilly! Known elsewhere as "urban golf" or "campus golf," gennis is played with golf clubs and tennis balls. Adam Jackson '05 mapped Central's original course in 2004—he and friends from West Mains got hooked on the game.

“IT DIDN'T REQUIRE A FULL SET OF CLUBS OR A WHOLE LOT OF SKILL — JUST A LOT OF GOOD TIMES WITH FRIENDS.”

#4

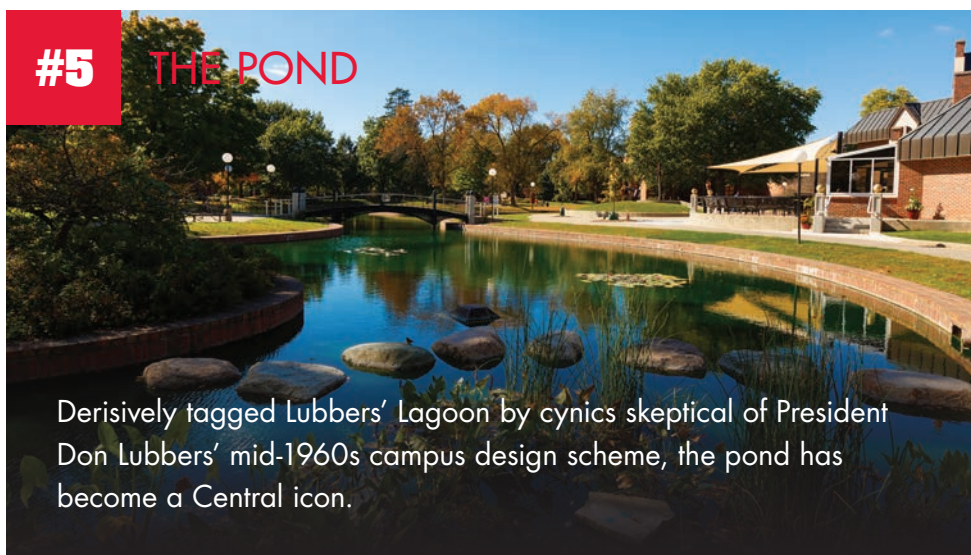


# STUDY ABROAD

Since 1965, students have packed their bags and headed off to study in the midst of another culture.

#5

THE POND



Derisively tagged Lubbers' Lagoon by cynics skeptical of President Don Lubbers' mid-1960s campus design scheme, the pond has become a Central icon.

#7

GEESE

Watch out, they bite.

#8

PIETENPOL CUP

Popular in the 1950s through the '80s and named for its creator, Dean Henry Pietenpol, this competition between freshmen and sophomore women required original musical numbers, complete with elaborate performances.

#6

HELLO, MY NAME IS

The President's First-Year Picnic is a tradition where new students meet and mingle with each other and Central's president in a casual atmosphere.

# #9



Sunny Eighmy  
@eighmys

Love hosting new @CentralCollege students! Welcome to Pella! #GoDutch #dinneronus

## DINNER ON US

During students' first weekend on campus, they're invited to dinner with faculty, staff and alumni. In small groups, they learn firsthand what it means to belong to the Central family. Some hosts make students welcome in their homes, serving a meal with their families. Others stretch the limits of creativity, inviting students to picnic on the roof of the Roe Center, play mini-golf in the library stacks or dine in a grocery store after hours. It's a special night that makes Central more like home — even before classes start. Students always come back saying, "That was so much fun!"



## #10

## FEEL THE RHYTHM

Flying Pans Steel Drum Band, under the direction of Stan Dahl, is always up to something new, such as its Halloween concert "Zombie Steel."

## #11

# "May your glory never die!"

Singing "CUI" after a win is a recent, but cherished football tradition, started in 2004.



# #12

## GOING GREEN

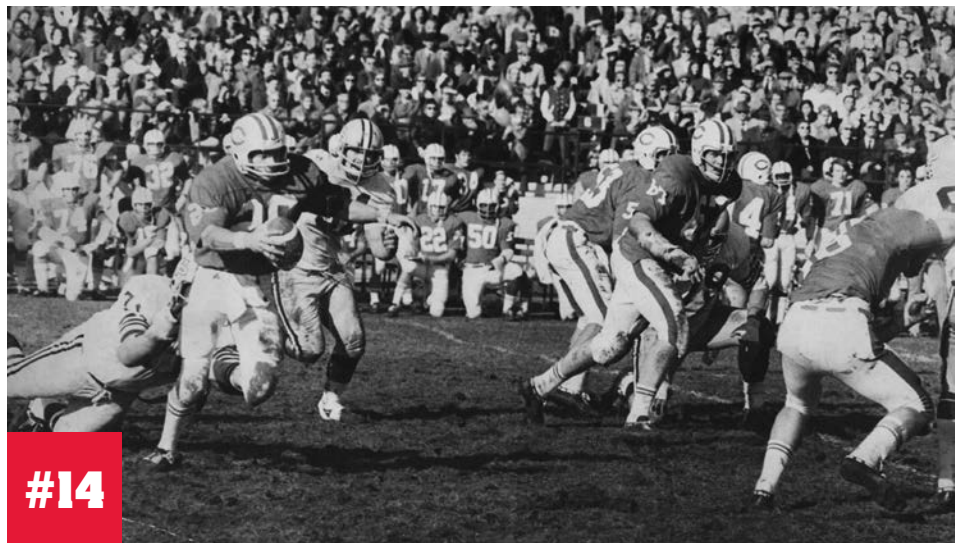
We're committed to sustainability, and our campus features multiple LEED (Leadership in Energy and Environmental Design)-certified buildings, including a platinum LEED rating for the Roe Center in 2010.



## #13

## BREAKFAST OF CHAMPIONS

What's better the night before finals than doughnuts at midnight, served by faculty and staff?



## #14

## BKE BALL RUN

In 1971, the BKE (Beta Kappa Epsilon) and Phi Delt (Phi Delta Theta) fraternities hatched a plan to run a football from Pella to Oskaloosa for the game against William Penn. Led by students Tom Summit and Scott "Scooter" Caldwell '75, they painted a football red and white, and a group of 32 guys each ran a half mile. The Marion County Sheriff helped clear the road, and a police escort led them through Oskaloosa to the stadium, where they handed off the ball to quarterback Chris Nelson, to the cheers of Central fans.



# #15

## IT'S CALLED WHAT?

The old acronym for Central University of Iowa Food Service (CUIFS) simply won't die as a way to refer to Central Market.



## #16

## ENGINEERING

Our newest major is making quite a splash, with high interest among incoming students.

## #17

## FACULTY

100 full-time faculty are the beating heart of Central. With scores of book and journal publications among them, they rank as leading experts in fields as diverse as prairie ecology, sports analytics and Shakespeare.

## #18

## STEAK NIGHT

The old Graham Dining Hall is remembered for monthly steak nights on Wednesdays. While it may not have been filet mignon, the steak was considered quite a treat. But no second helpings on steak night!

#19

## GEORGE'S PIZZA

Open since 1974, George's, a family-owned business, has long been feeding students and their families for pizza nights.



#20

## HONORS PROGRAM

Our top scholars bond through special seminars, and their work culminates in senior honors theses.



#21

## RCA

Since 1916, we've enjoyed an important affiliation with the Reformed Church in America.

#22

## SACRED VOICES

The A Cappella Choir's benediction at the end of a concert still gives us goose bumps.

#23

## PHONE BOOTH

Central's phone booth was a present from Dubuque insurance firm Cottingham & Butler. John Butler, now CEO, was impressed by Central's international programs and presented the London icon as a gift. It's a favorite for campus photos ever since.





# #25

## SERVICE

Serving others is a Central tradition, carried out through an annual Service Day, service-learning within classes and many more opportunities. Last year, Central students engaged in 71,850 community service hours.

# 71,850

## TOTAL COMMUNITY SERVICE HOURS

2015





Meaningful research opportunities —and partnerships with professors —are available in every major at Central. Our most recent Bosch Undergraduate Summer Research Fellows investigated not only biology, chemistry and psychology topics (which always emphasize research), but also history, theatre, Greek and sustainability. Jim Shriver, associate dean for curriculum and faculty development, says Central's breadth of research has increased dramatically in the last 15 years.

**"WE HAVE PEOPLE WORKING ALL OVER THE PLACE," SHRIVER SAYS. "THERE'S GOOD DIVERSITY."**

More students are participating than ever, too.



## THE TUNDRA

Before Weller Center for Business and International Studies was built, the grassy space at the intersection of Independence and W. Third St. served as a prime spot for snowman building and snowball throwing.



## MMM, ALMOND PASTE

Dutch Letters are a treat that tastes like home to Central alumni.



## ORGANIC GARDEN

Recently expanded, the garden provides learning opportunities as well as produce to feed students!

# #30

## CENTRAL FAMILY

Whether you're a student, graduate, faculty or staff member, community partner, parent or friend, you are a valued part of the Central family.



# #31

## LEMMING RACE

Suit up in your craziest costume and follow the Grand Lemming to the pond.





#

# 32

## GLASSBLOWING STUDIO

Hundreds of grads have been inspired, sweated, wrestled with molten glass and — finally! — created art in Central's John Vruwink Glassblowing Studio. It's a 40-year feature on campus, created in 1975. Today, the space is unrecognizable from Central's first "studio" in the courtyard behind Lubbers. The first studio was built in a week after a traveling glassblower demonstrated his work on Peace Mall. Central leaders approved \$1,000 for a two-week class, with the condition that any Central student could participate. At that time, professor of art John Vruwink '58 didn't have any more glass training than students. But Central's primitive studio, with equipment built from scrap metal and a garden hose, was a success. Significant updates came in 1986 and 2011 — and classes are still available to any student.

# #33



## HOMECOMING PARADE

For many years, floats — some with rude messages about the opposing team — were a big part of an annual homecoming parade.



## #34 PRESIDENTS

Central has had 21 different presidents. Each one left his mark on the institution.

## #35 DE HAAN FARM DONKEY

Many alums remember this charismatic animal that lived at the De Haan Farm, across the street from Kruidenier Center.

## #36 UNDER ARMOUR

Since 2013, the brand has been the official outfitter of the Dutch, and we're the first Iowa college or university to become an Under Armour school.

## #37 BRIDGE

The original bridge, based on a Japanese design, was built in 1967 and was known for years as "Lubber's Leap." The new bridge, made of steel and concrete and installed in 2004, was designed to be safer and less slippery than the previous version.

**#38**

## CENTRAL MARKET

Whether it's fresh-cookie Tuesday, ice-cream sundae Wednesday, or any other day of the week, the Market is cooking up delicious food with local ingredients.

**#39**

## SPRING FLING

It's boat races. It's Lip Sync Contest. It's a tradition to welcome spring with a few days of revelry.

**#40**

## THAT SWEET SOUND

Officially Vocal/Instrumental Jazz and Pop Combo, and known as "combos," these groups of piano, bass, drum, guitar and vocal students perform music of various styles.

**#41**

# DUTCH ATHLETICS

Our long tradition of athletic excellence includes 11 NCAA championships. Who could forget moments like Emilie Hanson Brown's ('95) 1993 rebound shot to clinch the NCAA Division III women's basketball semifinal? Or the 1974 win at the NCAA Division III Football Championship after holding off the Ithaca offense at the goal line? And let's not forget the coaches — since 1974 Central coaches have been honored 132 times as Iowa Conference Coach of the Year. Hoo-rah!

**#42**

## DISTINGUISHED SCHOLARSHIPS

We recognize academic success! Our most prestigious scholarships are awarded to students with outstanding academic profiles who demonstrate potential for future success.

# #43

## FROSH-SOPH PULL

Held each fall, the competition allowed underclassmen male to test their strength with tug-of-war. The losing team got dumped in Vermeer Pond!

## #44



## FALL DRAMATICS

The homecoming theater production is an annual tradition. This fall students presented "The School for Husbands," a comedy by Molière.

## #45



## GATHERING PLACE

Maytag Student Center provides a warm and comfortable place for students to come together for study, conversation and fun.

## #46

## THE HOLLAND THEATER

Pella's former movie theater, the Holland, was managed for years by Central. For \$30, students could buy a SUAP (Student Union Activities Pass) to see every movie that came to town. Central recently returned to the theater business by assuming managerial responsibility for the Pella Cinema.

## #47 WINDY CITY

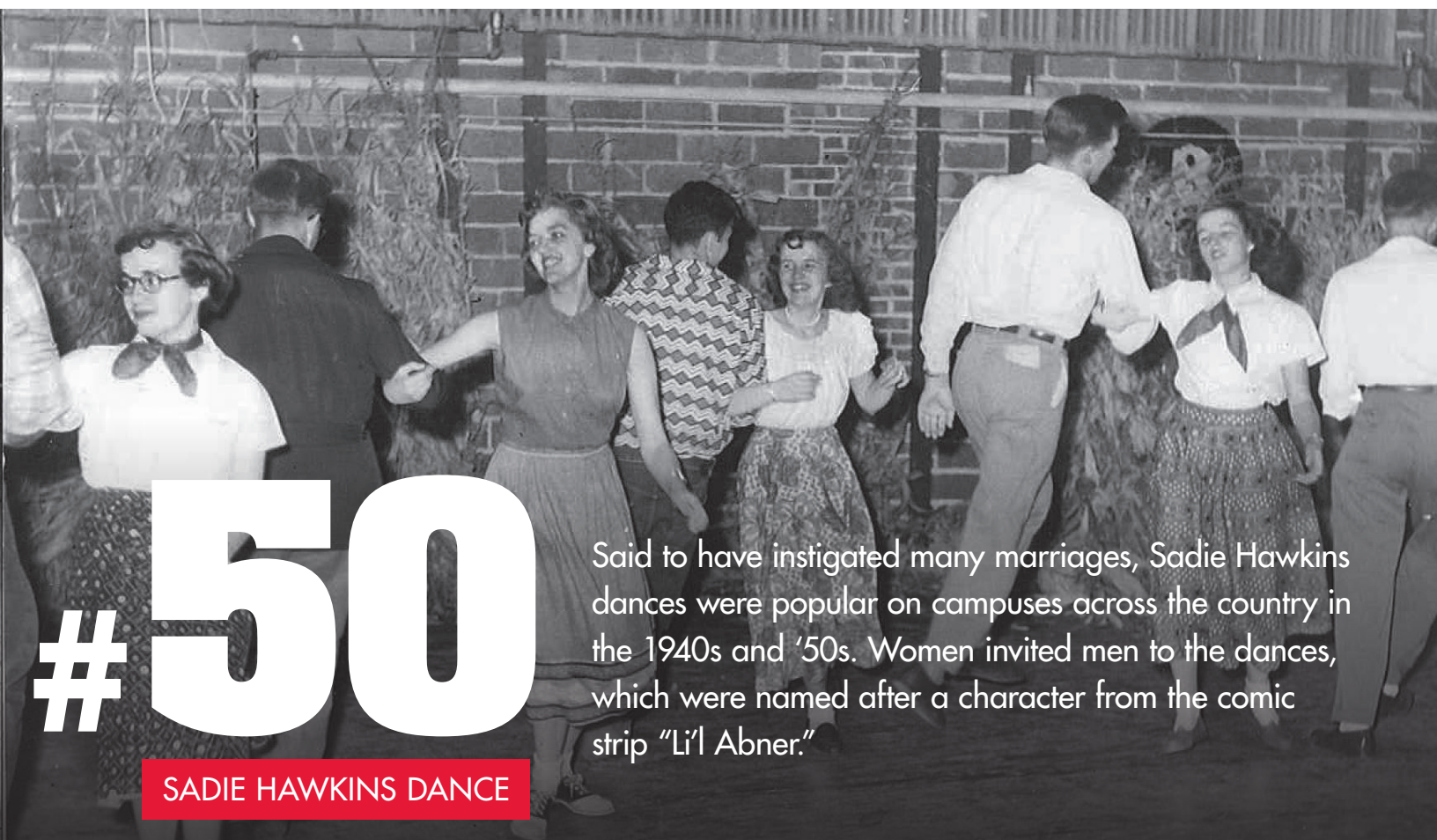
As one of the six founding colleges of the Chicago Semester program, Central has been sending students to work and study in the urban setting since 1974.

## #48 CHOO CHOO!

The railroad track that ran through campus is remembered by many former students. The train provided plenty of students with excuses for being late to class.



## #49 CHRISTMAS CANDLELIGHT CONCERT

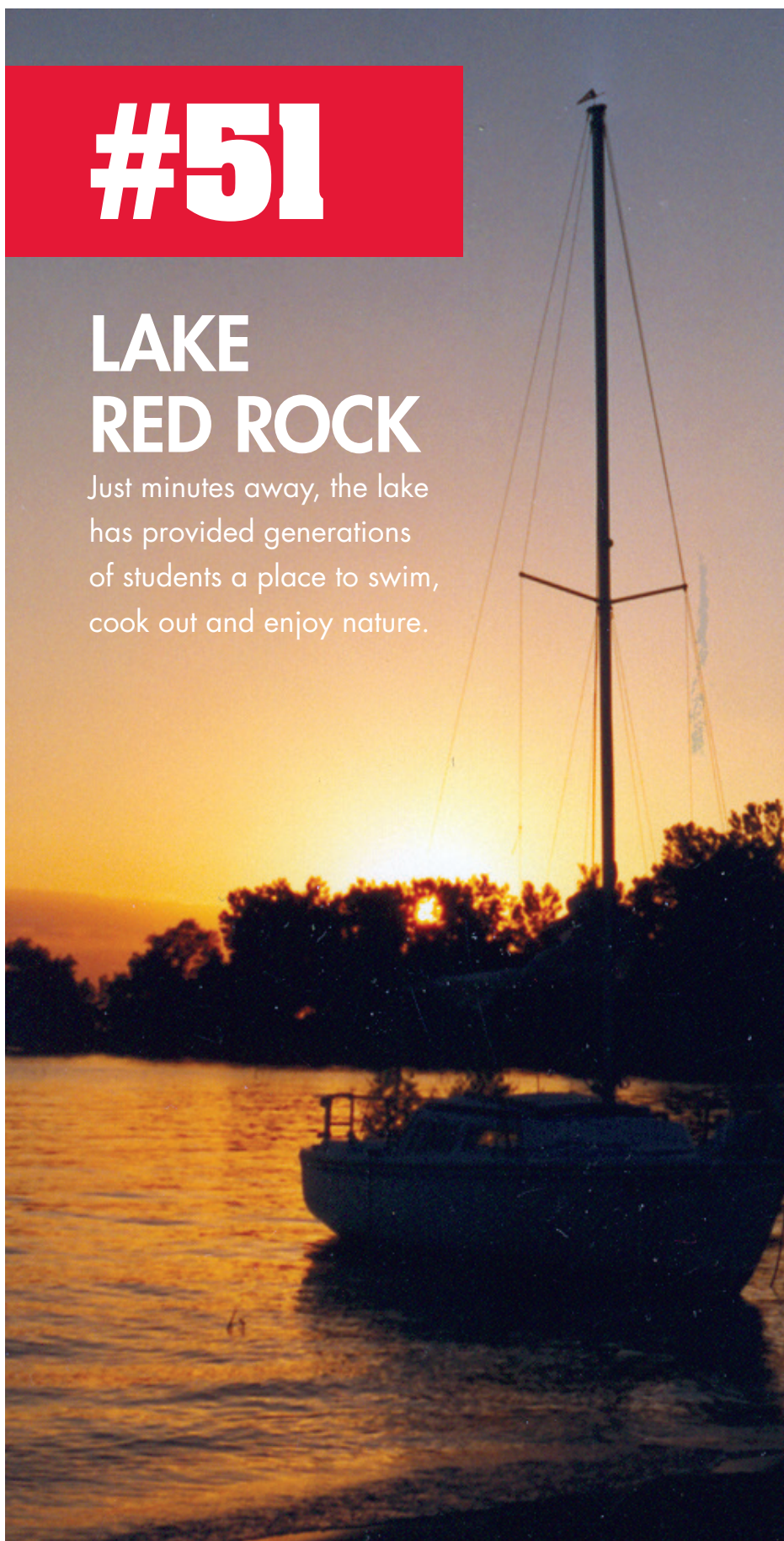


Said to have instigated many marriages, Sadie Hawkins dances were popular on campuses across the country in the 1940s and '50s. Women invited men to the dances, which were named after a character from the comic strip "Li'l Abner."

# #51

## LAKE RED ROCK

Just minutes away, the lake has provided generations of students a place to swim, cook out and enjoy nature.



# #52



## FLOWER POWER

Tulip Time is a chance to sample some poffertjies, try Dutch dancing and — if you're a student — wave to tourists as they take wagon tours past campus. Student clubs and teams work hard selling treats at their food stands.

# #53



## GRADUATION

You made it! It's the day we say hello to the future, but we never say goodbye to Central.

# FOREVER DUTCH

MAJOR ATHLETICS FACILITIES UPGRADE ANNOUNCED WITH FOREVER DUTCH LAUNCH

The next phase in a major facilities upgrade at Central College's A.N. Kuyper Athletics Complex was announced at a campus celebration Jan. 30.

Project costs will exceed \$15 million for the initial phases of Forever Dutch, a long-range athletics facilities initiative that began with outdoor field improvements over the past two years. An expansion of P.H. Kuyper Gymnasium is a major component of the next phase, to be followed by a renovation of the existing interior of the building, constructed in 1969. P.H. Kuyper Gymnasium was the first component of the 115-acre A.N. Kuyper Athletics Complex. Additional initiative details can be accessed via the Forever Dutch website at [forever.central.edu](http://forever.central.edu).

THIS IS  
THE NO. 1  
PRIORITY  
OF THE  
COLLEGE.

—MARK PUTNAM,  
PRESIDENT

Phase One provided for enhancements of outdoor athletics facilities and is largely completed. Included were improvements at the college's baseball, soccer and softball fields as well as spectator areas at Ron and Joyce Schipper Stadium, which now features a new main entrance, Heritage Plaza. The Kuyper Gymnasium expansion, part of Phase Two, will be more dramatic. A new south-side entrance will extend towards Independence Street, eliminating the outdoor staircase to improve accessibility. It will include an expansive lobby, a new second-floor atrium and a home for Central's Athletics Hall of Honor. The building will also expand to the west. The new

A new, more inviting and user-friendly south entrance will be added as part of improvements to P.H. Kuyper Gymnasium.



construction will feature a large varsity locker room on the lower level and, on the upper level, a new wrestling room more than double the size of the current wrestling room to accommodate growing rosters. The current wrestling room will be converted to house hitting cages for softball, baseball and men's and women's golf.

The expansion will also include gradual replacement of aging and overtaxed infrastructure in the 45-year-old facility. Groundbreaking is anticipated later this year.

Work will then quickly transition to the other component of Phase Two, the Kuyper Gymnasium renovation. The renovation will likely include additional locker room space, an expanded athletic training room, a new team meeting room, recruitment space and staff offices. Additional projects expanding practice/competition facilities could follow.

Kuyper Gymnasium's construction in 1969 helped launch Central's athletics program in its spectacular rise as an NCAA Division III juggernaut. Prior to 1969, the Dutch had claimed 16 Iowa Conference titles with four All-America awards. Since then, Central has captured 11 NCAA national team championships, 152 conference

titles, 32 individual NCAA crowns and 413 all-America awards. Central student-athletes have also received 21 NCAA postgraduate scholarships and 52 CoSIDA Academic All-America awards, all since 1969.

---

**"WE ARE SO  
EXCITED AND  
BLESSED THAT  
FOREVER DUTCH  
WILL ALLOW US  
TO CONTINUE  
MAKING SUCH A  
TRANSFORMATIONAL  
IMPACT ON  
STUDENTS' LIVES."**

**—ERIC VAN KLEY, ATHLETICS DIRECTOR**

---

Central is a model Division III program and, in fact, president emeritus Ken Weller, who was in office when Kuyper Gymnasium was constructed, authored the original Division III philosophy.

"We are deeply indebted to Central's 1960s leaders for the keen foresight they displayed in constructing P.H. Kuyper Gymnasium," said Central president Mark Putnam. "For more than 45 years it has ably served a generation of students, coaches and staff who have authored a record of achievement far beyond what any could have even dreamed."

But he noted that the Dutch program has outgrown the aging building, which was constructed for an eight-sport men's program with about 200 athletes. It now must serve a 19-sport men's and women's athletics program with 723 athletes in the past year. Team practices start as early as 5 a.m. and can run past 11 p.m. and the facilities receive heavy use by other students for intramurals and recreation. More than 94 percent of Central's students use it regularly. In addition, some 2,000 junior high and high school students used Central's athletics facilities last year for summer camps as well as off-season clinics. Ignoring the building's pressing needs is not an option.



"This is the No. 1 priority of the college," Putnam said, noting that the initiative was unanimously supported by the college's board of trustees.

A 13-person steering committee that includes trustees and alumni is assisting college officials with planning and leadership for Forever Dutch. Pete Cartwright '82, Dennis Hanson '07H and Molly Parrott '02 serve as tri-chairs. Other committee members include Ann (Van Hemert) Allen '00, Mike Dahlhauser '94, Jim Danks '64, Vern Den Herder '71, John Edwards '72, Tom Koos '86, Marc Poortinga '98, Steve Sikkink '83, Harry Smith '73 and Raegan Schultz Wagner '04.

Athletics director Eric Van Kley said the Dutch coaching staff is thrilled.

"Incredible people are what make the Central athletics tradition special, not bricks and mortar," he said. "But we've simply outgrown facilities that were designed to accommodate 200 athletes when we now have more than 700. We are so excited and blessed that Forever Dutch will allow us to continue making such a transformational impact on students' lives."

Enthusiasm for Forever Dutch in fundraising efforts during the initiative's quiet phase has been overwhelming, Putnam said, with several alumni and friends pledging their largest personal gifts ever. But broad-based support is critical to the success of Forever Dutch in what he terms a defining moment in the life of the college.



Lower-level lobby



Upper-level atrium



All-America corridor



Wrestling room

THIS IS YOUR TEAM. THIS IS YOUR TIME.

VISIT [FOREVER.CENTRAL.EDU](http://FOREVER.CENTRAL.EDU) TO DONATE ONLINE.

Call 800.447.0287 to pledge a gift.

# ALUMNI NEWSNOTES

## THE '50s

**Leonard Kalkwarf '50**, retired minister turned author, lives in Springfield, Va., with wife Beverly. In his latest book, *Exploring the Libraries of the U.S. Presidents*, Leonard takes his readers on a road trip seeking 13 presidential libraries and interesting sites along the way. It is available from Westbow Press, Amazon.com, Barnes and Noble and local bookstores. *Dear Craig*, published in June 2013, is a series of 15 letters written to his grandson, with whom he shared his faith and values.

## THE '60s

**Donald Hoekstra '67** has retired from the ministry and lives in Holland, Mich., with wife Patricia Carlson.

## THE '70s

**Curry Pikkaart '71** has retired after 41 years of pastoral ministry, having served churches in Sioux Center and three locations in Michigan: Holland, Kalamazoo and Grand Rapids. Curry and wife Barbara live in South Haven, Mich. In retirement, he will continue to minister part-time, write and enjoy travel with Barbara.

**Milo Johnson '73** is a retired American Airlines captain living in Palo Cedro, Calif., with wife Jill.

**Norm Northup '73** and Sharon Claes of Cedar Rapids were married Aug. 16. Norm is a retired teacher and coach. He continues to substitute teach in the Cedar Rapids area.

**Alan Primus '73** of Wellsburg retired after 20 years teaching elementary school in Moravia. After leaving his teaching position, Alan managed a federal government grant for special needs children and earned a master's degree in early childhood education from Morningside College. Seasonally, Alan drives a grain hopper for the elevator in Wellsburg.



▲ **Sue Brunscheen Cerwinski '74** was joined by six of her Sigma Sorority sisters in September for a weekend in Iowa. Shown (left to right) are: **Peggy Barnes Smith '74** from Temecula, Calif., **Gretchen Miller Klein '73** from Knoxville, **Denise Gosiewski Smith '74** from Watermill, N.Y., **Kim Evers Spreacker '73** from Pella, **Jean Slingerland Brandt '74** from Luzerne, **Lois Sorenson Boeyink '74** from Pella and **Sue Brunscheen Cerwinski '74** from Otley. Sue is campus visit coordinator in the admission office at Central College. She and husband **Tom Cerwinski '72** live in Otley.



◀ **Alan Van Zee '79** is director of music ministries at St. Michael and All Angels Episcopal Church in Lihue, Kauai, Hawaii, and lives in nearby Lawai. "About the same time I started my job at the church, I met another new staff member named Beth Debrey from nearby Kapaa, who works as church administrator. Some months later we discovered that we were fellow Midwesterners; myself from Iowa and she from nearby Rock Island, Ill. In further conversation, we discovered that Beth attended Central's London program in 1977. It turns out I missed meeting my new co-worker by just two years, as I was hired by the college in 1979 to be London Residence Director, where I remained until 1984. We both lived at 7 Bedford Place two years apart."

## SAVE THE DATE! | APRIL 29

Watch for details on how you can be part of the **Big Red FIVE!** So easy, everyone can do it!

## HOW DO YOU STRENGTHEN A COMPANY BRAND?



Read more of McGowan's interview at [civitas.central.edu](http://civitas.central.edu).

Ryan McGowan '02 found his sweet spot working in the field of human resources. At Sports Authority's corporate headquarters in Denver, McGowan's day job as director of organizational development and learning means he empowers 15,000 employees to find their niche in 470+ store locations across the country.

The Urbandale native majored in elementary education and after graduation, joined Intermountain AmeriCorps to teach K-6 environmental education. He joined Sports Authority in 2012, after earning his MBA at the University of Denver. Today he leads a team of 11 to develop the strengths of every individual in the organization.

**Q:** How do you promote a strong corporate culture, to get employees to literally "wear the brand"?

**A:** Today's workplace generation wants to know 'Am I going to have fun? Will I have work/life balance?' so we have to create a work environment where people thrive and have a good sense of well-being in all aspects of their life — physical, mental, spiritual, emotional, financial. All of this is anchored in continuous learning. It's also anchored in building a highly effective leadership team through executive coaching — raising leaders' ability to impact profitability while also influencing employee motivation and morale.

In our business, it's very important to have a sense of well-being; very important to get out and enjoy all sports. We empower play for all so we try to help employees see that it's a value proposition — that how we invest in employees makes a stronger organization.

It's challenging to make an emotional connection with 15,000 people across multiple locations. It's not so much how we do it, but why we do it — why we promote healthy lifestyles and sportsmanship; why we want to instill a sense of joy for sport, not just competition; why we want employees to overcome obstacles and be empowered to be better people at work and at home.

## THE '80s

**Luanne Tilstra '83** is professor of chemistry at Rose-Hulman Institute of Technology in Terre Haute, Ind., where she lives with husband Phillip Smith.

**Brenda Barth Medenwaldt '87** is co-principal of Colby Elementary School, which received the Department of Education Green Ribbon Award on June 3 in Washington, D.C. Brenda and husband Todd live in Abbotsford, Wis.

**Jeffrey Van Ekeren '89** is vice president at Associated Bank in Appleton, Wis., where he lives with wife Susan. They are the parents of four sons.

## THE '90s

For information about **Marty Schmidt '99**, see The Class of '15, Where are They Now?

**Jennifer Semler Walker '93** is head volleyball coach at Wartburg College in Waverly, where she lives with husband Steve and their two sons.

**Alicia Hargreaves '94** of Beaumont, Texas, is membership coordinator for KVLU at Lamar University.

**Tina Carnes Tennis '94** of Ottumwa is nursing clinical instructor at Indian Hills Community College. She is the mother of two sons.

**Brent Lawrenson '95** is CCE inventory manager at Van Wall Equipment in Perry. Brent and wife Tonna live in Madrid with their two sons.

**Kristy Ellerman Runge '95** is HRIS manager at St. Louis University. Kristy and husband **Shawn Runge '95** live in St. Louis, Mo., where Shawn is director of finance and operations at New City School. They are the parents of four children.

**Rob Lindley '95** of Chicago, Ill., appeared in *Funnyman* alongside fellow actor George Wendt, best known for his role as Norm on the television sitcom *Cheers*, and Tim Kazurinsky, former cast member of *Saturday Night Live*. The play ran Sept. 11 through Oct. 18 at Northlight Theatre.

**Kelly Van Den Berg Cederberg '97** is assistant professor of landscape architecture at the University of Arizona. Kelly and husband Jay live in Tucson, Ariz.

**Andrea Hall Cerwinske '98** is vice president of marketing and business development at Aimpoint Holding Group, Inc. Andrea and husband **Tim Cerwinske '98** live in Gainesville, Va., where Tim teaches science and social studies at Tyler Elementary School. They are the parents of twin daughters.

**Kori Wills Marshall '98** is marketing director at Asure Software in Minneapolis, where she lives with husband Eddie and their two sons.

**Cory Alexander '99**, lecturer at the University of Florida in the School of Music, has been selected as a finalist for the American Prize in Conducting — college/university choirs division — for his direction of the University of Florida Women's Chorale and Men's Glee Club. Cory and wife Bethany live in McIntosh with their daughter.

**Colleen Rogers '99** of Des Moines is donor relations manager for The Nature Conservancy in Iowa.

## THE '00s

For information about **Jenny Kettler Schmidt '03** and **Kerry Van Hemert '09**, see The Class of '15, Where are They Now?

**Justin Marvel '00** is pastor at Good Shepherd Presbyterian Church in Wayzata, Minn. Justin and wife **Jodi Jacobson Marvel '01** live in Robbinsdale, Minn., with their four children.

**Emily Lupita Plum-Güçlü '00** is an artist, poet and teacher. She runs her own business, Emily Lupita Studio, where she paints unique watercolor paintings and publishes books full of art and encouragement. *The Artist's Alphabet* is her third book, published in 2013. Emily and husband Alper live in Marietta, Ga., with their son.

**Chad Van Hauen '00** and Kristin Rutledge of Johnston were married Oct. 19, 2013. Chad is human resources representative at Anderson-Erickson Dairy Co., in Des Moines.

**Naomi Greelis-Mattos '01** was promoted to coordinator for international student services and principal designated school official at Metropolitan Community College. She competed in the State Games of America in figure skating and earned three first-place finishes in adult pre-bronze events and fourth place in an adult bronze event. Naomi and husband Stephen live in Omaha.

**Tom Morrison '03** is sales manager for large area lighting at Musco Sports Lighting in Oskaloosa, where he lives with wife **Jessica Riches Morrison '04** and their two sons.

**Jeanne Schooley Clark '04** is instructional coach at Oskaloosa High School. Jeanne and husband Michael live in New Sharon with their two sons.

**Beth Cunningham '05** and Mitch Jansen of Davenport were married Sept. 19. Beth is assistant track and field coach at St. Ambrose University.

**Ashley Wendt McFarland '05** is research director at Michigan State University in Chatham. Ashley and husband James live in Munising with their daughter.

**Kelli Debeer Stravers '05** is variable annuity team leader at Sammons Annuity Group. Kelli and husband Justin live in Grimes with their two children.

**Jacquelyn Johnson Duke '06** is president at Intrinsic Birthing LLC, a certified childbirth educator, labor doula and labor doula faculty, and a certified placenta encapsulationist with International Placenta and Postpartum Association. Jacquelyn and husband Jason live in Ankeny with their two daughters.

**Allison Schafer '06** and Emmanuel Ambane of Virginia Beach, Va., were married Oct. 17. Allison is international student ministry staff member with InterVarsity Christian Fellowship.

**Heidi Rathje Williams '06** is senior accountant at Aegon USA in Cedar Rapids. Heidi and husband Jacob live in Newhall with their two children.

**Dawn Nissen '07** and Janet Hutchings of Seattle, Wash., were married Aug. 9, 2014. Dawn is program manager of workplace violence at Amazon.com.

## THE '10s

For information about **Jacob Brueck '10**, **John Roloff '10** and **Amanda Scott '10**, see the '00s.

For information about **Keith Rush '13** and **Rachel Boertje '14**, **Jodi Landt '14**, **Mariah Brammer '14**, **Kelsey Howard Van Hemert '12**, **Kerry Van Hemert '09**, **Stephani Wickett '11**, **Jeff Knouse '16**, **Tate Offenburger '14**, **Heidi Schulte '14**, **Jordan Judkins '14**, **Alan McCleary '14**, **Sean Prihoda '14**, and **Tim Wilson '14**, see The Class of '15, Where are They Now?

**John Roloff '10** was named director of operations with the Milwaukee Symphony in Milwaukee Wis. Previously John was in the same role with the Des Moines Symphony.

**Rachel Staman '11** and Alan Mejibovsky of Baltimore, Md., were married Sept. 6. Rachel teaches fifth grade at Garrison Forest School in Owing Mills.

**Kathryn Bruxvoort '12** and Matthew Deugan of Bondurant were married Sept. 12. Kathryn is quality assurance analyst at Nationwide Insurance.

**Chelsea Grieger Toppin '12** is office manager at Locke Funeral Services in Cedar Falls, where she lives with husband **Curt Toppin '11** and their son. Curt is software analyst at Overland Conveyor.

**Anna Higgins '13** is assistant athletic trainer at Fort Lewis College in Durango, Colo.

**Jill Hite '13** and Cody Schuring of Pella were married Sept. 26. Jill teaches kindergarten through fifth grade special education in the Lynnvile Sully Community School District.

**Adam Ledvina '13** is natural resources aide for the Iowa Department of Natural Resources in Monroe.

**Emma Putnam '13** of Brookline, Mass., is co-op intern in the photo department of the Boston Globe. Emma is pursuing an undergraduate degree in media art with a concentration in photography at Northeastern University.

**Tia Dupont '14** of Mankato, Minn., is G.A. fitness wellness director at South Central College in North Mankato.

**Emily Hutchison '14** of Martinsdale is hair and makeup artist at Smart Style in West Des Moines.

**Justin Livingston '14** of Des Moines is a certified personal coach at GolfTEC.

## CLASS OF 2015 WHERE ARE THEY NOW?

**Amy Andrews** is outreach coordinator at Cedar Falls Food Co-op in Cedar Falls.

**Samuel Apland** is patient care technician at Pella Regional Health Center in Pella.

**Callie Aunan** is post issue representative at MetLife in West Des Moines.

**Kaitlyn Baetsle** teaches special education in the Des Moines Public School System.

**Schylar Bardole** is production supervisor at Smithfield Farmland.

**Elizabeth Bauman** is a teller at Community 1st Credit Union in Centerville.

**Taylor Beckman** is working toward a doctor of pharmacy degree at Texas Tech School of Pharmacy in Amarillo.

**Emily Benson** teaches second grade at St. Luke the Evangelist Catholic School in Ankeny.

**Jesiah Blauw** is a financial advisor at Edward Jones in San Antonio, Texas.

**Theodore Boehne** is pursuing a degree in museum studies at Western Illinois University at the Quad Cities in Rock Island.

**Brendon Boerm** is working toward a doctor of dental surgery degree at the University of Iowa College of Dentistry.

**Jordan Bohr** of Pella is online communications specialist at Central College.

**Austin Boldt** is working toward a degree in veterinary technology at Harcum College in Bryn Mawr, Pa.

**Ethan Bonde** is driver manager at CRST in Cedar Rapids.

**Justin Bown** is investment operations associate at Principal Financial Group in Des Moines.

**Rachel Braak** is programs coordinator at the Science Center of Iowa in Des Moines.

**Ethan Brandt** is office manager at Barton Solvents in Des Moines.

**Jordan Burns** is a police officer with the Sioux City Police Department.

**Breeann Buseman** is assistant athletic trainer at Indian Hills Community College in Ottumwa.

**Sarah Calderwood** is a physical therapist assistant student at Indian Hills Community College in Ottumwa.

**Katie Canney** and **Brian Fyfe** of Des Moines were married Sept. 26. Katie teaches fourth grade in the Des Moines Public Schools and Brian is ABA specialist at The Homestead in Clive.

**Grady Carson** is rehab therapist at HealthSource of West Des Moines.

**Adam Clark** is GIS coordinator for Hamilton County in Webster City.

**Brittany Clark** is teaching assistant at La Petite Academy in Cedar Rapids.

**Kaylee Clark** teaches special education at Columbus Elementary School in Chariton.

**Carson Claypool** is credit analyst at First National Bank in Pierre, S.D.

**Shelby Coen** is working toward a master's degree in social sciences from Arizona State University in Tempe.

**Landon Coker** of West Des Moines is personal trainer at Lifetime Fitness Trainers Inc. in Urbandale.

**Ryan Collins** is accounting operations specialist at TCF Equipment Finance in Waterloo.

**Shannon Coulson** is research associate in tumor immunology at NewLink Genetics in Ames.

**Trevor Curry** is athletic trainer at Physiotherapy Associates in Des Moines.

**Clayton Curwin** is financial advisor assistant at United Investment Group in Faribault, Minn.

**Annette Dean** is working toward a master of sciences degree from the University of Wisconsin in Madison.

**Doris Dingeman** is IT asset manager at Pella Corp.

**Rebekah Docter** is outdoor education instructor at Covenant Heights in Estes Park, Colo.

**Laura Draheim** of West Des Moines is lab technician at DuPont Pioneer in Johnston.

**Emily Drey** teaches special education and instructional strategy at Camanche Elementary School in Camanche.

**Emily Eberhardt** is working toward a master's degree in education from Buena Vista University in Storm Lake.

**Aaron Eiseler** is Midwest field applications engineer at Precision Pulley & Idler in Pella.

**Rachel Evans** is working toward a master's degree in health sciences at the University of Kentucky in Lexington.

**Megan Flynn** and **Nana-Yaw Sapon-Amoah** were married Aug. 8. Megan teaches

elementary ELL in the Des Moines Public Schools and Yaw is assistant product manager at Briggs Corp. in Des Moines.

**Jacob Forgie** is environmental specialist at Iowa Department of Inspections and Appeals in Marshall County.

**Dennis Forrest** is studio assistant at TRAINology Fitness and J at School JCC in Chicago.

**Joshua Forst** teaches math and coaches tennis at Downers Grove South High School in Downers Grove, Ill.

**Blaine Forsythe** and **Morgan Sharp '13** were married July 19, 2014. Blaine teaches sixth grade math in Pella Community School District.

**Abby Foster** teaches special education at Martinsdale-St. Mary's Elementary School in Martinsdale.

**Beth Foster** is employed at the Henry Doorly Zoo in Omaha, Neb.

**Rachel Frana** is engineering technician for the City of Altoona.

**Emily Friedrichs** is project assistant at WebSpec Design in Urbandale.

**Brandon Fritz** is athletic trainer at Ballenger Chiropractic in West Des Moines.

**Aly Garwood** is patient care coordinator at VGM Group in Waterloo.

**Hannah Gettes** is interim membership assistant at Clinton Area Chamber of Commerce in Clinton.

**Jordan Gier** is personal trainer at Midwest Athletic Club in Cedar Rapids.

**Kaitlyn Gillett** is working toward a master's degree in physical, occupational and speech therapy from the University of Nebraska Medical Center in Omaha.

**Shantell Gish** teaches math at East High School in Des Moines.

**Dana Gordon** teaches kindergarten through fifth-grade special education at CAM School District in Anita.

**Emily Grant** is human resources intern at Hendrickson in Woodridge, Ill.

**Sydney Gray** and **Jesse Slinkman** of Clinton were married May 30. Sydney teaches first grade at Ekstrand Elementary School in DeWitt.

**Matthew Guinane** is personal trainer at Anytime Fitness in Pella.

**Cody Gullett** is outbound group leader at Target Corp. in Cedar Falls.

**Brian Hadley** of Pella is an associate technical analyst at Pella Corp.

**Lauren Haselhuhn** teaches math at PCM High School in Monroe.

**Zach Hendricks** is certified athletic trainer at Physiotherapy Associates in Des Moines.

**Isabelle Hicks** of Alamo, Calif., is registered client services representative at Dudum Financial in Lafayette, Calif.

**Kaitlyn Hilpipre** is assistant manager at Hollister Co. and sales and marketing intern for the Iowa Cubs in Des Moines.

**Grace Hirl** is associate product specialist at Pella Corp.

**Megan Hoehns** teaches seventh grade special education for the Knoxville Community School District in Knoxville.

**Andrew Holcomb** is production scientist at Integrated DNA Technologies in Coralville.

**Torie Hollingsworth** is patient registrar at Pella Regional Health Center.

**Lisa Houser** teaches fourth grade at Oskaloosa Elementary School in Oskaloosa.

**Grace Hove** is employed at The Royal Amsterdam Hotel in Pella.

**Ashlyn Huegel** is pursuing a degree in nursing from Trinity College of Nursing in Rock Island, Ill.

**Ashley Hulsing** teaches high school math in the Brooklyn-Guernsey-Malcom Community School District in Brooklyn.

**Michael Iseman** is assistant men's basketball coach at Central College.



**Heath Jackson** is working toward a medical degree from Kent State University College of Podiatric Medicine in Cleveland, Ohio.

**Matthew James** is account specialist at Schuring and Uitermarkt in Pella.

**Brody Janssen** is material testing technician and environmental scientist at Klingner and Associates in Hannibal, Mo.

**Kate Johnson** and **Daniel Tiskevics '16** of San Juan Capistrano Calif., were married Nov. 25, 2014. Kate is senior representative at Primerica and instructor at Studio Barre.

**Amanda Kahl** is working toward a master's degree in public health at the University of Iowa.

**Timothy Kahl** is associate product specialist at Pella Corp.

**Melissa Ketcham** is software engineer at Williams Interactive in Cedar Falls.

**Andrew Kleis** is on staff at Wartburg College as an athletic trainer while pursuing a master's degree in athletic training through A.T. Still University out of Mesa, Ariz.

**Jacob Klopfenstein** is secondary teacher at Abundant Life Christian Schools in La Union, Lempira, Honduras.

**Gideon Kluge** is detention officer at Marion County Sheriff's Office in Knoxville.

**Stephanie Koch** teaches kindergarten at Foundations Academy in Brighton, Colo.

**Hailey Koerselman** is physical therapy aide at Sanford Hospital in Sheldon.

**Emily Koontz** is product support specialist with Informa Investment Solutions in Zephyr Cove, Nev.

**Jessica Laffin** is pool monitor at Mountain Park Ranch in Phoenix, Ariz.

**Jodie Landt** is campus intern for InterVarsity Christian Fellowship in Pella and Oskaloosa.

**Jordan Langer** is AmeriCorps VISTA at Central College and assistant tennis coach.

**Lucas Lazenby** of Fort Collins, Colo., is biological technician at the USDA-APHIS National Wildlife Research Center.

**Christopher Lekwa** is tier 1 tech support person at Holmes Murphy Financial Services in West Des Moines.

**Brittany Lenth** teaches sixth grade at Wapsie Valley Schools in Fairbank.

**Rachel Lindhart** is working toward a master's degree in college student affairs from Eastern Illinois University in Charleston.

**Justin Livingston** is certified personal coach at GolfTEC in Clive.

**Alicia Long** is technician II at Boehringer Ingelheim Vetmedica Inc. in Fort Dodge.

**Tyler Lowy** is sales solution specialist at Heritage Lace in Pella.

**Elaina Loyd** teaches French at Cedar Falls High School in Cedar Falls.

**Nicholas Lutsch** is software development engineer at CMMS Data Group in Chicago.

**Michael Mackin** is marketing communications coordinator at Carrier Access, Inc. in Clive.

**John Mainquist** teaches fifth grade at Stanton Elementary School in Stanton.

**Devin Mandi** is police officer with Marshalltown Police Department.

**Kaitlyn Matzen** is human resources administrator at Winnebago Industries in Forest City.

**Ashton Mayer** is shift supervisor and assistant event coordinator at Cedar Ridge Vineyards and Distiller in Swisher.

**Wes McLaren** is cash control department manager at Adventureland Park in Altoona.

**Brayton Meeker** is management trainee at Enterprise Rent-A-Car in Pella.

**Brandon Mennenoh** teaches kindergarten through 12th grade music at Stanton Community Schools in Stanton.

**Shelby Messerschmitt** and **Sean Coen '14**

of Tempe were married Aug. 1. Sean is a management trainee at Enterprise Rent-A-Car while Shelby is pursuing a master's degree in counseling from Arizona State University at Mesa.

**Kaylee Micu** is pet stylist at Petco in Cedar Falls.

**Bridget Miller** is health counselor at Tanager Place in Cedar Rapids.

**Ellie Miller** is lab analyst at Institute for Environmental Health in Omaha, Neb.

**Zach Miller** is working toward a medical degree from Kentucky College of Osteopathic Medicine in Pikeville.

**Derek Miner** is AmeriCorps VISTA at the Iowa DNR.

**Aimee Moberly** teaches third grade in the South Tama Community School District in Tama.

**Samuel Moore** is tax associate at Andersen Tax in Chicago, Ill.

**Emily Morgan** is pursuing a master's degree in social sciences from the University of Iowa.

**Sarah Mueller** is working toward a master's degree in physical, occupational and speech therapy from Mercy College of Health Sciences in Des Moines.

**Hayley Mullins** is working toward a degree in health sciences at Bangor University in Bangor, Wales.

**Noel Murray** is working toward a degree in physical therapy at Des Moines University.

**Lauren Newendorp** is program center manager at Ruffalo Noel Levitz in Cedar Rapids.

**Kailee Nihart** teaches in the Des Moines Public School District.

**John Norgaard** is laboratory technician at Feed Energy in Des Moines.

**Mary Oakley** is sales specialist at Limited Brands in West Des Moines.

## DID YOU KNOW?

# 500+

Over 500 students received a Journey Scholarship this year.

When you give to the Journey Scholarship Fund you are not just giving to light bulbs or buildings. Your gift goes directly to support the financial aid of a deserving student. With every gift you make to the Journey Scholarship Fund, you are changing a life. At Central, your gift matters.

For more information, go to [www.central.edu/give](http://www.central.edu/give)

**Josh Osborn** is working toward a degree in health sciences at Central Methodist University in Fayette, Mo.

**Greta Page** is claims specialist and insurance adjuster at Nationwide Insurance in Des Moines.

**Elizabeth Paladino** is wet chemist at TestAmerica in Cedar Falls.

**Ben Palmer** is a student Des Moines University College of Osteopathic Medicine.

**Rachel Pearson** has enlisted in the United States Army.

**Stormi Peterson** is staff accountant at Terex in Waverly.

**Alan Pfadenhauer** is worship leader at Third Reformed Church in Pella.

**Bryanna Pierce** is working toward a master's degree in health sciences from Northwest Missouri State in Maryville, Mo.

**Chris Poesch** is financial accountant I at Principal Financial Group in Des Moines.

**Megan Querry** is claims processor at United Health Group in Davenport.

**Alison Ranniger** is art instructor at Valiant Studios and direct support professional at Resources for Human Development in Omaha, Neb.

**Karissa Rempe** of Ottumwa teaches kindergarten through sixth grade special

education at Eddyville-Blakesburg-Freemont School in Blakesburg.

**Kalli Richardson** and **Keith Rush '13** of Griswold were married July 26, 2014. Kalli is coach, fitness test and nutrition consultant at CrossFit 424, where Keith is a CrossFit coach.

**Karlee Rock** is working toward a master's degree in forensic science from Marshall University in Huntington, W.V.

**Aaron Rosenstiel** is staff accountant at Hormel Foods Corp. in Austin, Minn.

**Blake Rozendaal** and **Rachel Boertje '14** of Winston-Salem, N.C., were married June 20. Blake is web application developer at Intelligent Business Solutions. Rachel is customer liaison team manager at Intelligent Business Solutions.

**Nick Rozendaal** is co-owner and partner of Cornerstone Industries Inc. in Otley.

**Robert Rushing** is business insights specialist at Pella Corp.

**Kelly Ryan** is tax accountant at LWBJ in West Des Moines.

**Kari Sandage** is working toward a master of sciences degree from Antioch University New England in Kenne, NH.

**Emily Saville** and **Drew Jackson** of Johnston were married Aug. 27. Emily is pursuing a master's degree in social sciences from

the University of Iowa while Drew is project scientist at Trileaf Corp. in Ankeny.

**Kalli Schamberger** teaches fifth grade in the Bettendorf Community School District.

**Jill Schildroth** is working toward a nursing degree at Allen College in Waterloo.

**Mallory Schulenberg** is store manager at Thelma's Treats in Des Moines.

**Nicole Schulz** is working toward a master's degree in physical, occupational, speech therapy from St. Catherine University in St. Paul, Minn.

**Lucas Sears** of Vinton teaches elementary physical education in the Vinton-Shellsburg Community School District, where he is an assistant high school football coach.

**Lauren Sharp** is athletic trainer at Knoxville Hospital and High School.

**Jayson Shepherd** is athletic training assistant at Western Washington University in Bellingham, where he is pursuing a master's degree in health sciences.

**Tim Shepherd** is working toward a master's degree in Health Sciences from Western Illinois University in Macomb.

**Mallory Sims** is assistant auditor at Auditor of State in Des Moines.

**Chris Sirridge** is home preservation specialist with Wells Fargo in West Des Moines.

**Sydney Slinkman** teaches first grade at Ekstrand Elementary School in DeWitt.

**Blaze Smith** is office administrator and immigration advisor at the Academia Language School in Honolulu, Hawaii.

**Makeya Smith** is administrative assistant at Iowa Connections Academy in Anita.

**Sara Snead** and **Ryan Blumer** were married Dec. 14, 2014. Ryan is working toward a master's degree in physical, occupational, speech therapy from Southwest Baptist University in Bolivar, Mo.

**Shannon Snyder** is program planner at Iowa Department of Public Health in Des Moines.

**Emily Spencer** teaches Spanish at Des Moines Public Schools.

**Caitlin Stark** is occupational health specialist at Fit for Work in Temple, Texas.

**Claire Stewart** is working toward a nursing degree at Allen College in Waterloo.

**Rachael Tharp** is working toward a master's degree in military history from South New Hampshire University in Hooksett, N.H.

**Nathan Thiessen** is instructor for the Central Music Academy at Central College.

**Jacob Tune** is design technician at Salt River Project in Tempe, Ariz.

**Makenzie Vander Molen** is pursuing a master's degree in [physical, occupational, speech therapy](#) from the University of South Dakota in Vermillion.



▲ **Breanne Riesberg** and **Mark Hentschel** were married. Aug. 1. Breanne is a retail coordinator at Cache Bake Shoppe in Clive. Pictured first row (left to right): **Alex Glavas '15**. Second row: **Nick Kuntz '17**, **Jeremy Dolder '17**, **Mark Hentschel '15**, **Breanne Riesberg Hentschel '15**, **Brian Fyfe '15** and **Mike Kobylinski '03**. Third row: **Kyle Langstraat '17**, **Gavin MacDonald '16**, **EJ Schroder '17**, **Dennis Forrest '15**, **Hunter Viedenkamp '12**, **Nick Lutsch '15**, **Jake Stein '14** and Coach Garry Laidlaw. Third row: **Kris Johnson '14**, **Matt Woodcock '13**, **Daniel Peacock '14**, **KJ McQuerrey '12**, **Travis Yets '14** and **Chris Poesch '15**.

▼ **Lindsay Young** and **Jordan McDonald** of Cedar Falls were married July 3. Lindsay is campus staff intern with InterVarsity at the University of Northern Iowa and Jordan is worship and technology coordinator at Nazareth Evangelical Lutheran Church. Pictured front row (left to right) **Jodi Landt '14**, **Abby Fyfe '18**, **Caitlyn Conway '18**, **Breeann Buseman '15**, **Alex Nelson '16**, **Jordan McDonald '15**, **Lindsay Young McDonald '15**, **Kallie Schive '15**, **Mariah Brammer '14**, **Noel Murray '15**, **Anna Bowser '16**, **Molly Hale '16**, **Kora Scotton '17**, **Kelly Ryan '15** and **Ellie Bryant '15**. Second row: **Grant Beck '15**, **Kaitlyn Hilpipe '15**, **Katie Gatzke '17**, **Jon Beckham '15**, **Kelsey Howard Van Hemert '12**, **Kerry Van Hemert '09**, **Stephani Wickett '11**, **Jeff Knouse '16**, **Tate Offenburger '14**, **Heidi Schulte '14**, **Jordan Judkins '14**, **Katie Zimmerman '18**, **Betsy Van Haaften '17**, **Anna Shaw '18**, **Elizabeth Carman '16**, **Lauren James '16** and **Lindsey Greer '17**. Back row: **Marty Schmidt '99**, **Jenny Kettler Schmidt '03**, **Alan McCleary '14**, **Jake Klopfenstein '15**, **Alan Pfadenhauer '15**, **Sean Prihoda '14**, **Andy Holcomb '15**, **Matt VanSant '16**, **Nick McVay '17**, **Regan Baker '16**, **Matt Ridgway '15**, **Tim Kahl '15**, **Yaw Sapon-Amoah '15**, **Megan Flynn Sapon-Amoah '15**, **Morgan Wilson '16**, **Andrew Fritz '16**, **Bryton Thoren '15**, and **Tim Wilson '14**.



**Kristopher Van Gent** of Pella is store manager at Iowa Bike and Fitness.

**Ethan Van Kooten** is product support specialist at Weiler Products in Knoxville.

**Lyndi Van Maaren** is accounts payable associate at Kum & Go in Des Moines.

**Dana Van Renterghem** is marketing intern at Musco Lighting in Oskaloosa.

**Kelsey Van Tasell** is championship administrator for the Texas Golf Association in Dallas, Texas.

**Mandi Vincent** is working toward a master's degree in theatre from Dell'Arte International School of Physical Theatre in Blue Lake, Calif.

**Rebecca Wall** is working toward a master of sciences degree from Iowa State University.

**Molly Ward** is on the road in the Wiernmobile for Oscar Mayer.

**Lexie Waymire** teaches vocal music in the Lynnville Sully Community School District.

**Janet Weers** is senior business systems analyst at MidAmerican Energy in Des Moines.

**Mallory Welk** is pursuing a nursing degree from the University of Wisconsin at Oshkosh.

**Jo dee Wickings** is shift manager at Starbucks in Clive.

**Richard Williamson** is graphic designer and brand manager at Sports Page Sporting Goods in Pella.

**Logan Wilson** is MILIEU treatment counselor at Orchard Place in Des Moines.

**Allison Wood** is working toward a master's degree in child life from the University of Iowa.

**Tyler Woodruff** is systems engineer at ICE Technologies.

**Jordan Youngman** is accounts receivable specialist at MediRevv in North Liberty.

**McKenna Zimmerman** is patient care technician at Mercy Medical Center in Des Moines.

**Zach Zylstra** is merchandiser with Frito Lay in West Des Moines.



Alumni are invited to submit Newsnotes online. We want to hear about recent promotions, degrees, honors, relocations, marriages and births to keep classmates and friends informed about important changes in your life. Update information online at [civitas.central.edu](http://civitas.central.edu) or email [alumni@central.edu](mailto:alumni@central.edu). News items also are welcome by phone, 800-447-0287 or 641-628-5154. Or send a note to Central College Alumni Office, 812 University, Campus Box 5200, Pella, IA 50219.

## ADVANCED DEGREES

**Luanne Tilstra '83**, Ph.D., physical chemistry, Louisiana State University, 1987.

**Tina Carnes Tennis '94**, master of sciences, nursing education, University of Phoenix, Jan. 2013.

**Brenda Breneman Welch '95**, master of education, curriculum and instructional technology, Iowa State University, Aug. 6.

**Justin Marvel '00**, master of theology, Puritan Reformed Theological Seminary, Aug.

**Beth Cunningham Jansen '05**, master's degree, organizational leadership, St. Ambrose University, 2013.

**Ashley Wendt McFarland '05**, master's degree, environmental science, Iowa State University, 2007.

**Shanna Aberson '13**, master's degree, kinesiology, Texas A&M University, Aug.

**Anna Higgins '13**, master's degree, athletic training, University of Colorado, May 1.

**Emily Hutchison '14**, cosmetology degree, La James International College, Nov. 4.

## ARRIVALS

**Judson '00** and **Jodi Jacobson Marvel '01**, daughter Juliet Sarah, Nov. 14, 2014

Michael and **Jeanne Schooley Clark '04**, son Chase Lee, July 10

Todd and **Mandy Bahr Lauderbaugh '05**, son Caleb Dale, Sept. 24

James and **Ashley Wendt McFarland '05**, son Tyler James, May 29

Stephanie Eckhardt and **Brad Munos '05**, son Storm Alexander, Oct. 21

Justin and **Kelli Debeer Stravers '05**, son Camden Peter, Feb. 28

**Justin '05** and **Jill Williams Van Soelen '06**, daughter Macy Laine, Aug. 20

Jacob and **Heidi Rathje Williams '06**, son Russell Paul, July 6

**Chris '06** and **Becky Wells Borgman '07**, daughter Elyse Kathryn, Nov. 10

**Thomas '07** and **Dana Wilkerson Sheehan '06**, son Jude Wilkerson, May 19

Kyle and **Jennifer Curl Luttgeharm '08**, daughter Elaina Marie, March 31

Nicole and **McKinley Steig '09**, daughter Quinn Delaney, April 18, 2014

Matt and **Chantelle Wilson Broome '10**, daughter Leilani Noelle, Sept. 9

**Curt '11** and **Chelsea Grieger Toppin '12**, son Miles Scott, July 23

Michael and **Mara Venteicher Walstead '11**, daughter Jessa Lynn, Sept. 25

## IN MEMORIAM

**Jane Rozendaal Ten Clay '46** of Orange City, Nov. 22

**Murt Byers Kooi '48** of Pella, Nov. 2

**Richard Miller '62** of Novato, Calif., Nov. 8

**Maria Wilson Byk '70** of Palm Beach Gardens, Fla., Nov. 1

**Allen Grooters '70** of Mason City, Nov. 27

**Keith Groenendyk '73** of Des Moines, Oct. 26



### GERT BEINTEMA

Gertrude Beintema passed away Sep. 16, 2015, at age 79. A New Jersey native, Beintema joined the Central staff in the development office in 1972 and worked at the college for 31 years. She moved to the athletics department in 1979 where she served as an assistant to then-athletics director Ron Schipper, secretary for the coaches, receptionist for the department and fill-in mother to countless athletes.

Former athletics director Al Dorenkamp witnessed seeing those relationships develop. "She loved education because she loved students," he said.

**"Gert wasn't a faculty member but she was an educator. She probably helped mold and shape some athletes as much as anyone on our campus."**

Beintema also served as ticket and business manager, banquet coordinator and travel director for Central's 19 intercollegiate sports teams. She was among the first inductees to the Central Athletics Hall of Honor in 2003.



### HAROLD MOLENAAR

Former Central trustee Harold Molenaar of Holland, Mich., passed away Nov. 13, 2015, at age 81. He served as a trustee from 1994 to 2004, and he and his wife Esther were given honorary degrees from Central in 2008 during homecoming celebrations. His son William attended Central, graduating in '84, which led to Molenaar's deep involvement with the college. He was a major supporter for many years. Born in Kalamazoo, Mich., Molenaar earned his bachelor's degree from Hope College in 1956. He was a long-time employee at USF Holland.

# Doors Opening for Central Vocalist

Chris Weaver '10 finds his music getting attention in NYC.

by Laura Billingsley '04



**Singing for Jennifer Hudson is just one of Chris Weaver's musical successes.**

Chris Weaver '10 is having a pretty great 2016. So far, he's landed a recording contract, performed at venues across New York City and had the chance to sing for one of his heroes. In early January, a friend invited him to a party, but kept the host a secret. He was standing at the bar, when his friend told him to turn around. "It was Jennifer Hudson!" Weaver says. His friend and Hudson were both performing in the musical "The Color Purple" on Broadway. Later in the evening, Weaver had the

chance to sing for Hudson.

Things like this keep happening to Weaver, a native of Long Island who recently returned to his home state. Now living in New York City, he is exploring where his musical talent may lead him and finding quite a lot of success.

Weaver came to Central thanks to a little prodding from his godmother, who had known about the college for years and encouraged church members to visit. He visited and at first felt the difference

from New York was too great. "When I first stepped on campus, it was definitely a 'no,'" Weaver says. But by the time the day was over, and he had spoken with people across campus, his viewpoint had changed. He appreciated the genuine interest people expressed in him, as well as the "gorgeous campus." He decided to give Central a try.

A general studies major, Weaver spent a lot of time on the stage while at Central. He participated in A Cappella Choir, Chamber Singers and Vocal and Instrumental Combos, as well as Campus Ministries. Some of his favorite memories from college include the opportunities he had to travel with ensembles, as well as his semester spent studying abroad in London.

After graduating, Weaver worked as a worship coordinator for Lutheran Church of Hope in West Des Moines for three years, then he spent some time in Iowa City. But the music kept calling, and in December 2014 he moved to New York to pursue his dream of singing. He's been singing at clubs and cabarets across the city, as well as a weekly karaoke show frequented by celebrities like Kelly Ripa.

Weaver's hard work is paying off—he recently signed a recording contract with a house music label based in Italy. And last October, Weaver toured Columbia with New York's Harlem Jubilee Singers. He says the speed of his success is "kind of surreal, but it's also kind of awesome."

Weaver says his vocal style is best described as soul. "I believe when you get onstage, you do it not just for you, but for everyone in the audience," he says. "You sing from your heart."



# Alumni Spotlight

## Starbucks Scientist Uncovers Food Secrets

by Cindy Deppe

Coffee is a driving force in Brian Schaneberg's life. Working in the area of scientific and regulatory affairs for Starbucks, the 1995 Central graduate leads a team of 18 scientists who assure regulatory compliance of labeling, nutrition and international standards for beverage and food products for the international company headquartered in Seattle.

"This is surprisingly creative work," Schaneberg says of the position he's held for nearly three years. "We work with all cross-functions of the business — from marketing and product development to food safety and packaging.

"My job is to bridge science and business. That's what drives me. I've always been curious about 'how does it work?' As a scientist, you are always asking questions and finding answers. Although I am not professional in these fields, I get to play in the health field in this job — asking 'what is beneficial about coffee?' — and I get to play in the field of regulation — asking 'what's right?' in meeting guidelines and laws."

When the Dietary Guidelines Advisory Committee came out in favor of daily coffee consumption, few could have appreciated the findings as much as Schaneberg. "This conclusion by the committee further supports the results being reported in the

peer reviewed scientific literature. But our work requires more expertise than just coffee — there are teas and juices on the menu, too."

Schaneberg's interest in natural products began on campus with adviser Dan Bruss, former chemistry professor. "Dr. Bruss was big into plant use and natural products for drug discovery. When I was looking for summer research opportunities during my junior year, he connected me with a program at Virginia Commonwealth University (VCU) that focused on plants and natural products. I worked at VCU the summer before my senior year on a plant-based research project."

When Schaneberg came to Central from Rochelle, Ill., he was on a path to engineering school. But his interest in the 3D visual nature of organic chemistry led him to change his major to chemistry and his minor to biology during his first semester. He completed his Ph.D. at VCU in 2000, where he studied the isolation and elucidation of possible therapeutic drugs while always digging further into the folklore of plants, or the history and stories behind plant populations.

"Plants have a certain tradition in certain cultures and areas of the country and world," Schaneberg says. "Reading



▲ Brian Schaneberg '95 began his research on plants while at Central.

about and learning about what those stories are and what's used for medicinal purposes is an important field of study."

Schaneberg continued his plant-based research in a post-doctoral program at the National Center for Natural Products at the University of Mississippi, where he worked on development of methodologies to identify plants for drug use.

During the next decade, Schaneberg worked for two top natural products research companies — ChromaDex and Mars Botanical, the scientific arm of the famous candy brand. At Mars, Schaneberg helped to develop and bring to market the company's first dietary supplement, CocoaVia.

